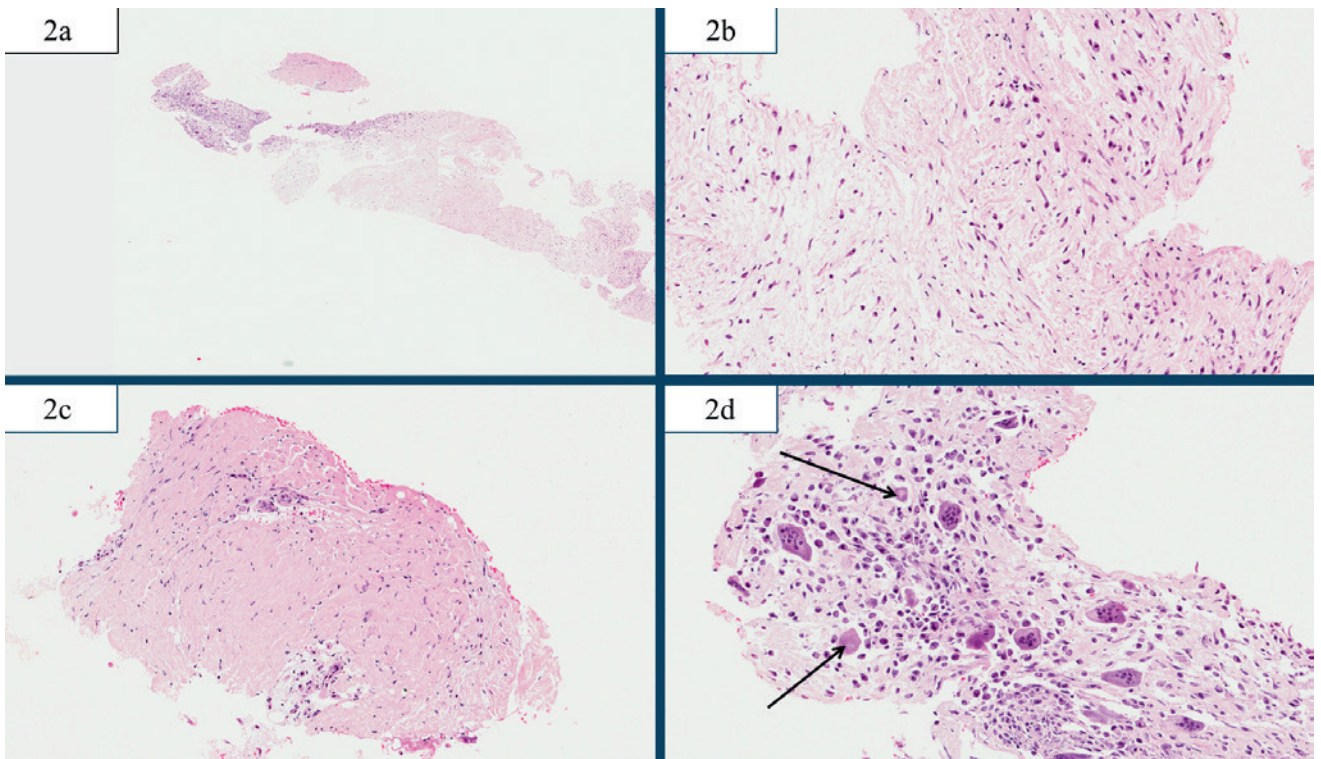




PATHOLOGICA

Journal of the Italian Society of Anatomic Pathology and Diagnostic Cytopathology,
Italian Division of the International Academy of Pathology



In this issue:

Review

Glomus coccygeum: a review

Original article

Detection and genotyping of hpv-dna through different types of diagnostic platforms in liquid-based cervical-cytology samples

Case reports

Pathologica storica

Pathologica ai tempi della Spagna

Proceedings

IV Meeting Nazionale Gruppo Italiano Paleopatologia

04

Vol. 110 December 2018



SIAPEC-IAP

Società Italiana di Anatomia Patologica e Citopatologia Diagnostica,
Divisione Italiana della International Academy of Pathology

**PACINI
EDITORE
MEDICINA**



PATHOLOGICA

Journal of the Italian Society of Anatomic Pathology
and Diagnostic Cytopathology,
Italian Division of the International Academy of Pathology

Editor-in-Chief

M. Barbareschi, Trento

Associate Editor

M. Chilosi, Verona

Managing Editor

P. Nozza, Genova

Scientific Board

R. Alaggio, Padova
G. Angeli, Bologna
V. Barresi, Messina
A. Bondi, Bologna
G. Bufamante, Milano
G. Cenacchi, Bologna
C. Clemente, Milano
M. Colecchia, Milano
P. Cossu-Rocca, Olbia
G. d'Amati, Roma
E. d'Amore, Vicenza
A. D'Errico, Bologna
C. Doglioni, Milano
F. Facchetti, Brescia
G. Fornaciari, Pisa
M.P. Foschini, Bologna
G. Fraternali Orcioni, Genova
E. Fulcheri, Genova
W. Grigioni, Bologna
M. Guido, Padova
L. Leoncini, Siena
M. Lestani, Vicenza
G. Magro, Catania
E. Maiorano, Bari
A. Marchetti, Chieti
G. Marucci, Bologna
B. Murer, Venezia
O. Nappi, Napoli
G. Negri, Bolzano
A. Orlandi, Roma
M. Papotti, Torino
M. Paulli, Pavia
G. Pelosi, Milano
F. Pierconti, Roma
S. Pileri, Bologna
P. Querzoli, Ferrara

L. Resta, Bari
G. Rindi, Roma
A.G. Rizzo, Palermo
G. Rossi, Modena
G. Santeusano, Roma
A. Sapino, Torino
L. Saragoni, Forlì
G.L. Taddei, Firenze
G. Tallini, Bologna
L. Ventura, L'Aquila
G. Zamboni, Verona

Editorial Secretariat

M. Brunelli, Verona
G. Martignoni, Verona
F. Pedica, Milano

**Governing Board
SIAPEC-IAP**

President:

M. Truini, Milano

President Elect:

A. Sapino, Torino

General Secretary:

E. Bonoldi, Lecco

Past President:

G. De Rosa, Napoli

Members:

M. Basciu, Bolzano
E. Bonoldi, Lecco
G. Fadda, Roma
A. Maria Florenza, Palermo
E. Fulcheri, Genova
E. Maiorano, Bari
A. Marchetti, Chieti
D. Massi, Firenze
G. Mazzoleni, Bolzano
G. Negri, Bolzano
F. Pietribiasi, Torino

Associate Members

Representative:

T. Zanin, Genova

Copyright

Società Italiana di Anatomia
Patologica e Citopatologia
Diagnostica, Divisione
Italiana della International
Academy of Pathology

Publisher

Pacini Editore S.r.l.
Via Gherardesca, 1
56121 Pisa, Italy
Tel. +39 050 313011
Fax +39 050 3130300
info@pacineditore.it
www.pacinieditore.it

04

Vol. 110 December 2018



SIAPEC-IAP

Società Italiana di Anatomia Patologica e Citopatologia Diagnostica,
Divisione Italiana della International Academy of Pathology

PACINI
EDITORE
MEDICINA

Updated information for Authors including editorial standards for the preparation of manuscripts

Pathologica is intended to provide a medium for the communication of results and ideas in the field of morphological research on human diseases in general and on human pathology in particular.

The journal welcomes contributions concerned with experimental morphology, ultrastructural research, immunocytochemical analysis, and molecular biology. Reports of work in other fields relevant to the understanding of human pathology may be submitted as well all papers on the application of new methods and techniques in pathology. The official language of the journal is Italian. Articles from foreign authors will be published in English.

Authors are invited to submit manuscripts according to the instructions outlined below:

by mail addressed to:

Pathologica – pathologica@pacinieditore.it

The manuscript must have the following enclosures:

1) The manuscript must be submitted by e-mail to the address: pathologica@pacinieditore.it

The files containing the article, illustrations and tables must be sent in attachment and the statements of the Authors indicated at the previous points 2 and 3 must also be enclosed or sent by air mail.

2) A separate covering letter, signed by every Author, must state that the material submitted has not been previously published, and is not under consideration (in whole or in part) elsewhere, and that it is conform with the regulations currently in force regarding research ethics. The Authors are solely responsible for the statements made in their paper, and must state that they have obtained the informed consent of patients for their participation in the experiments and for the reproduction of photographs. For studies performed on laboratory animals, the authors must state that the relevant national laws or institutional guidelines have been adhered to. Only papers that have been prepared in strict conformity with the editorial norms outlined herein will be considered for publication. Their eventual acceptance is conditional upon a critical assessment by experts in the field, the implementation of any changes requested, and the final decision of the Editor-in-Chief.

3) Conflict of Interests. in the letter accompanying the article, Authors must declare if they got funds, or other forms of personal or institutional financing – or even if they are under contract – from Companies whose products are mentioned in the article. This declaration will be treated by the Editor-in-Chief as confidential, and will not be sent to the referees. Accepted works will be published accompanied by a suitable declaration, stating the source and nature of the financing.

Editorial standards for the preparation of manuscripts:

Pathologica will accept for publication only manuscript in English.

The article, in English, should be written in Microsoft Word™ preferably, saving files in .RTF, .DOC or .DOCX format. Any other programme can be used, including open source programmes: please always save files in .RTF, .DOC or .DOCX format.

Do not use, under any circumstances, graphical layout programmes such as Publisher™, Pacemaker™, Quark X-press™, Adobe Indesign™. Do not format the text in any way (avoid styles, borders, shading ...); use only character styles such as italics, bold, underlined.

Do not send the text in PDF.

Text and individual tables must be stored in separate files.

The article must include:

- (1) a title (in English);
- (2) an abstract (in English);
- (3) a set of key words (in English);
- (4) titles and legends for all of the tables and figures.

The Authors are required to correct and return (within 48 hours of their being sent) the first set of galley proofs of their paper.

On the first page of the manuscript should appear:

A concise *title*; a set of *key words* (no more than 5); the *names* of the authors and the *institution* or *organisation* to which each author is affiliated; the category under which the authors intend the work to be published (although the final decision here rests with the Editor-in-Chief); and the *name*, *mailing address*, and *telephone* and *fax numbers* of the author to whom correspondence and the galley proofs should be sent.

The second page should contain the abstract. At the end of the text should appear the bibliography, the legends to the tables and figures, and specification (where applicable) of the congress at which all or part of the data in the paper may have already been presented.

Tables

Must be limited in number (the same data should not be presented twice, in both the text and tables), typewritten one to a page, and numbered consecutively with Roman numbers. In the text and legend of the tables, Authors must use, in the exact order, the following symbols: *, †, ‡, §, ¶, **, ††, ‡‡ ...

Figures

Send pictures in separate files from text and tables.

- Software and format: preferably send images in .TIFF or .JPEG format, resolution at least 300 dpi (100 x 150 mm). Will not be accepted for publication manuscript with images of bad quality.

The references must be limited to the most essential and relevant citations, identified in the text by Arabic numbers and listed at the end of the manuscript in the order in which they are cited. The format of the references in the bibliography section should conform with the examples provided in N Engl J Med 1997;336:309-15. The first six Authors must be indicated, followed by et al. Journals should be cited according to the abbreviations reported on Index Medicus.

Examples of the correct format for bibliographic citations:

Journal articles: Jones SJ, Boyede A. *Some morphological observations on osteoclasts*. Cell Tissue Res 1977;185:387-97.

Books: Taussig MJ. *Processes in pathology and microbiology*. Oxford: Blackwell 1984.

Chapters from books: Vaughan MK. *Pineal peptides: an overview*. In Reiter RJ (ed.). *The pineal gland*. New York: Raven 1984:39-81.

Acknowledgements and information on grants or any other forms of financial support must be cited at the end of the references.

Notes to the text, indicated by an asterisk or similar symbol, should be shown at the bottom of the page.

Mathematical terms, formulae, abbreviations, units and measures should conform to the standards set out in Science 1954;120:1078.

Drugs should be referred to by their chemical name; the commercial name should be used only when absolutely unavoidable (capitalizing the first letter of the product name and giving the name of the pharmaceutical firm manufacturing the drug, town and country).

The editorial office accepts only papers that have been prepared in strict conformity with the general and specific editorial norms for each survey. The acceptance of the papers is subject to a critical revision by experts in the field, to the implementation of any changes requested, and to the final decision of the Editor in Chief.

The Authors are required to correct and return (within 3 days of their mailing) only the first set of galley proofs of their paper.

Authors may order reprints, at the moment they return the corrected proofs by filling in the reprint order form enclosed with the proofs.

The Publisher remains at the complete disposal of those with rights whom it was impossible to contact, and for any omissions.

Journal registered at "Registro pubblico degli Operatori della Comunicazione" (Pacini Editore srl registration n. 6269 - 29/8/2001).

Published by Pacini Editore, Pisa, Italy - December 2018

CONTENTS

Review

Glomus coccygeum: a review

M. Bisceglia, S. Bisceglia, C. Ciampi, G. Panniello, C. Galliani..... 287

Original article

Detection and genotyping of hpv-dna through different types of diagnostic platforms in liquid-based cervical-cytology samples

B. Cassani, G. Soldano, D. Finocchiaro, S. Conti, A. Bulfamante, G. Lemorini, G. Bulfamante 294

Case reports

Unclassified sex cord/gonadal stromal testis tumor with a "pure" spindle cell component: a case report

C. Spairani, S. Squillaci, A. Pitino, F. Montefiore, W. Fusco..... 302

Calcifying aponeurotic fibroma: a core biopsy-based diagnosis

F. Motta, S. Scavo, G.M. Vecchio, G. Fuccio-Sanzà, F. Nicolosi, G. Magro 307

Lymphnode metastasis of thyroid cancer misinterpreted as lateral aberrant thyroid 40 years before identification of primary tumor. Case report and review of the literature

G. Riva, M. Villanova, G. Francia, G. Valotto, L. Mezzetto, M. Toiari, A. Eccher, L. Novelli..... 313

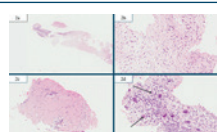
Pathologica storica

Pathologica ai tempi della Spagnola

C. Patriarca, C.A. Clerici..... 316

Proceedings

IV Meeting Nazionale Gruppo Italiano Paleopatologia 321



Front cover: Core biopsy specimen. (A) Low magnification of the fragments. (B) Area composed of plump spindle- to focally stellate-shaped cells. Mitoses and necrosis were absent. (C) Hypocellular tumor area with a dense fibrous stroma. (D) Multinucleated osteoclastic-like giant cells are intermingling with the spindle cells; microcalcifications (arrows) were scattered throughout the fibrous stroma (page 309).