



# PATHOLOGICA

JOURNAL OF THE ITALIAN SOCIETY OF ANATOMIC PATHOLOGY AND DIAGNOSTIC CYTOPATHOLOGY,  
ITALIAN DIVISION OF THE INTERNATIONAL ACADEMY OF PATHOLOGY

#### Editor-in-Chief

**M. Barbareschi**  
Service of Anatomy and  
Pathological Histology, Trento

#### Associate Editor

**M. Chilosi**  
Department of Pathology, Verona  
University, Verona

#### Managing Editor

**P. Nozza**  
Pathology Unit, Ospedali Galliera,  
Genova, Italy

#### Italian Scientific Board

**M. Brunelli**  
University of Verona  
**G. Bulfamante**  
University of Milano  
**G. Cenacchi**  
University of Bologna  
**C. Clemente**  
San Donato Hospital, Milano  
**M. Colecchia**  
IRCCS National Cancer Institute,  
Milan  
**P. Cossu-Rocca**  
University of Sassari  
**G. d'Amati**  
Sapienza University of Rome  
**E. d'Amore**  
San Bortolo Hospital, Vicenza  
**A. D'Errico**  
S. Orsola-Malpighi Hospital,  
University of Bologna  
**P.A. Di Tos**  
Ospedale Ca Foscari, Treviso

**C. Doglioni**  
San Raffaele Scientific Institute, Milan  
**M. Fassan**  
University of Padua  
**G. Fornaciari**  
University of Pisa  
**M.P. Foschini**  
Bellaria Hospital, Bologna  
**G. Fraternali Orcioni**  
S. Croce e Carle Hospital, Cuneo  
**E. Fulcheri**  
University of Genoa  
**M. Guido**  
University of Padua  
**L. Leoncini**  
University of Siena  
**M. Lestani**  
ULSS 8 Berica  
**C. Luchini**  
University of Verona  
**G. Magro**  
University of Catania  
**E. Maiorano**  
University of Bari Aldo Moro  
**A. Marchetti**  
University of Chieti-Pescara  
**G. Marucci**  
Bellaria Hospital, Bologna  
**G. Martignoni**  
IRCCS Sacro Cuore Don Calabria  
Hospital, Negrar, Verona  
**G. Negri**  
Pathology Unit Central Hospital  
Bolzano  
**A. Orlandi**  
University of Rome "Tor Vergata",  
Rome  
**M. Papotti**  
University of Turin

**M. Paulli**  
University of Pavia; IRCCS San  
Matteo Hospital Foundation, Pavia  
**G. Pelosi**  
University of Milan  
**F. Pierconti**  
Catholic University of Sacred  
Heart, Rome  
**S. Pileri**  
Milano European Institute of  
Oncology, Milan  
**P. Querzoli**  
St Anna University Hospital, Ferrara  
**L. Resta**  
University of Bari  
**G. Rindi**  
Catholic University of Sacred  
Heart, Rome  
**E.D. Rossi**  
Catholic University of Sacred  
Heart, Rome  
**A.G. Rizzo**  
"Villa Sofia-Cervello" Hospital,  
Palermo  
**G. Rossi**  
Hospital S. Maria delle Croci,  
Azienda Romagna, Ravenna  
**G. Santeusanio**  
University of Rome "Tor Vergata"  
**A. Sapino**  
University of Torino  
**L. Saragoni**  
Morgagni-Pierantoni Hospital, Forlì  
**G. Tallini**  
University of Bologna  
**L. Ventura**  
San Salvatore Hospital, L'Aquila  
**G. Zamboni**  
University of Verona

# 01

Vol. 111  
March 2019



**SIAPEC-IAP**  
Società Italiana di Anatomia Patologica e Citopatologia Diagnostica,  
Divisione Italiana della International Academy of Pathology

**PACINI  
EDITORE  
MEDICINA**

#### **International Scientific Board**

**R. Alaggio**  
*Children's Hospital of Pittsburgh of UPMC, Pittsburgh, Pennsylvania, USA*

**G. Bhagat**  
*Columbia University, New York, USA*

**A. Capitanio**  
*Linköping University Hospital, Linköping, Sweden*

**T.V. Colby**  
*Mayo Clinic Scottsdale, AZ, USA*

**G. Cserni**  
*University of Szeged, Szeged, Hungary*

**S. Di Palma**  
*Royal Surrey County Hospital, Guilford, UK*

**J. Fukuoka**  
*Nagasaki University, Nagasaki, Japan*

**C. Giannini**  
*Department of Laboratory Medicine and Pathology Mayo Clinic Rochester, MN, USA*

**J. Kulka**  
*Semmelweis University, Budapest, Hungary*

**T. Mentzel**  
*Dermatopathology Bodensee, Friedrichshafen, Baden-Württemberg Germany*

**M. Mihm**  
*Brigham and Women's Hospital, Harvard Medical School, Boston, Massachusetts, USA*

**L. Pantanowitz**  
*University of Pittsburgh Medical Center, Pittsburgh, PA, USA*

**M. Reyes-Múgica**  
*UPMC Children's Hospital of Pittsburgh; University of Pittsburgh School of Medicine, Pittsburgh, PA, USA*

**F. Roncaroli**  
*Imperial College of London, UK*

**A. Skálová**  
*Charles University, Plzen, Czech Republic*

**M. Smith**  
*Mayo Clinic Scottsdale, AZ, USA*

**S. Suster**  
*Medical College Wisconsin, Milwaukee, WI, USA*

**Y. Zen**  
*King's College Hospital & King's College London, UK*

#### **Editorial Secretariat**

**F. Pedica**  
*San Raffaele Scientific Institute, Milan*

#### **Governing Board SIAPEC-IAP**

**President:**  
**M. Truini**  
*Niguarda Cancer Center, Ospedale Niguarda Ca' Granda, Milan*

**President Elect:**  
**A. Sapino**  
*University of Torino*

**General Secretary:**  
**E. Bonoldi**  
*Niguarda Cancer Center, Grande Ospedale Metropolitano Niguarda, Milan*

**Past President:**  
**G. De Rosa**  
*A. Cardarelli Hospital, Naples*

**Members:**  
**M. Basciu**  
*Service of Anatomy and Pathological Histology, Bolzano*

**E. Bonoldi**  
*Niguarda Cancer Center, Grande Ospedale Metropolitano Niguarda, Milan*

**G. Fadda**  
*Fondazione Policlinico Universitario A. Gemelli-IRCCS, Rome*

**A. Maria Florena**  
*University of Palermo*

**E. Fulcheri**  
*University of Genoa*

**E. Maiorano**  
*University of Bari*

**A. Marchetti**  
*University of Chieti-Pescara, Chieti*

**D. Massi**  
*University of Florence*

**G. Mazzoleni**  
*Service of Anatomy and Pathological Histology, Bolzano*

**G. Negri**  
*Central Hospital Bolzano*

**F. Pietribiasi**  
*Santa Croce Hospital, Moncalieri*

**Associate Members**

**Representative:**  
**T. Zanin**  
*E.O. Ospedali Galliera, Cyto-Histopathology Department, Genova*

#### **Copyright**

Società Italiana di Anatomia Patologica e Citopatologia Diagnostica,  
Divisione Italiana della International Academy of Pathology

#### **Publisher**

Pacini Editore S.r.l.  
Via Gherardesca, 1  
56121 Pisa, Italy  
Tel. +39 050 313011  
Fax +39 050 3130300  
info@pacinieditore.it  
www.pacinieditore.it

# UPDATED INFORMATION FOR AUTHORS INCLUDING EDITORIAL STANDARDS FOR THE PREPARATION OF MANUSCRIPTS

*Pathologica* is intended to provide a medium for the communication of results and ideas in the field of morphological research on human diseases in general and on human pathology in particular.

The journal welcomes contributions concerned with experimental morphology, ultrastructural research, immunocytochemical analysis, and molecular biology. Reports of work in other fields relevant to the understanding of human pathology may be submitted as well as all papers on the application of new methods and techniques in pathology. The official language of the journal is Italian. Articles from foreign authors will be published in English.

**Authors are invited to submit manuscripts according to the instructions outlined below:**

by mail addressed to:

**Pathologica – [pathologica@pacineditore.it](mailto:pathologica@pacineditore.it)**

The manuscript must have the following enclosures:

- 1) The manuscript must be submitted by e-mail to the address: [pathologica@pacineditore.it](mailto:pathologica@pacineditore.it)  
The files containing the article, illustrations and tables must be sent in attachment and the statements of the Authors indicated at the previous points 2 and 3 must also be enclosed or sent by air mail.
- 2) A separate covering letter, signed by every Author, must state that the material submitted has not been previously published, and is not under consideration (in whole or in part) elsewhere, and that it is conform with the regulations currently in force regarding research ethics. The Authors are solely responsible for the statements made in their paper, and must state that they have obtained the informed consent of patients for their participation in the experiments and for the reproduction of photographs. For studies performed on laboratory animals, the authors must state that the relevant national laws or institutional guidelines have been adhered to. Only papers that have been prepared in strict conformity with the editorial norms outlined herein will be considered for publication. Their eventual acceptance is conditional upon a critical assessment by experts in the field, the implementation of any changes requested, and the final decision of the Editor-in-Chief.
- 3) Conflict of Interests. In the letter accompanying the article, Authors must declare if they got funds, or other forms of personal or institutional financing – or even if they are under contract – from Companies whose products are mentioned in the article. This declaration will be treated by the Editor-in-Chief as confidential, and will not be sent to the referees. Accepted works will be published accompanied by a suitable declaration, stating the source and nature of the financing.

## **Editorial standards for the preparation of manuscripts:**

*Pathologica* will accept for publication only manuscript in English. The article, in English, should be written in Microsoft Word™ preferably, saving files in .RTF, .DOC or .DOCX format. Any other programme can be used, including open source programmes: please always save files in .RTF, .DOC or .DOCX format.

Do not use, under any circumstances, graphical layout programmes such as Publisher™, Pacemaker™, Quark X-press™, Adobe Indesign™. Do not format the text in any way (avoid styles, borders, shading ...); use only character styles such as italics, bold, underlined. Do not send the text in PDF.

Text and individual tables must be stored in separate files.

The article must include:

- (1) a title (in English);
- (2) an abstract (in English);
- (3) a set of key words (in English);
- (4) titles and legends for all of the tables and figures.

The Authors are required to correct and return (within 48 hours of their being sent) the first set of galley proofs of their paper.

On the first page of the manuscript should appear:

A concise *title*; a set of *key words* (no more than 5); the *names* of the authors and the *institution* or *organisation* to which each author is affiliated; the category under which the authors intend the work to be published (although the final decision here rests with the Editor-in-Chief); and the *name*, *mailing address*, and *telephone* and *fax numbers* of the author to whom correspondence and the galley proofs should be sent.

The second page should contain the abstract. At the end of the text should appear the bibliography, the legends to the tables and figures, and specification (where applicable) of the congress at which all or part of the data in the paper may have already been presented.

## **Tables**

Must be limited in number (the same data should not be presented twice, in both the text and tables), typewritten one to a page, and numbered consecutively with Roman numbers. In the text and legend of the tables, Authors must use, in the exact order, the following symbols: \*, †, ‡, ¶, \*\*, ††, ‡‡ ...

## **Figures**

Send pictures in separate files from text and tables.

- Software and format: preferably send images in .TIFF or .JPEG format, resolution at least 300 dpi (100 x 150 mm). Will not be accepted for publication manuscript with images of bad quality.

The references must be limited to the most essential and relevant citations, identified in the text by Arabic numbers and listed at the end of the manuscript in the order in which they are cited. The format of the references in the bibliography section should conform with the examples provided in *N Engl J Med* 1997;336:309-15. The first six Authors must be indicated, followed by et al. Journals should be cited according to the abbreviations reported on Index Medicus.

## **Examples of the correct format for bibliographic citations:**

*Journal articles:* Jones SJ, Boyede A. *Some morphological observations on osteoclasts*. *Cell Tissue Res* 1977;185:387-97.

*Books:* Taussig MJ. *Processes in pathology and microbiology*. Oxford: Blackwell 1984.

*Chapters from books:* Vaughan MK. *Pineal peptides: an overview*. In Reiter RJ (ed.). *The pineal gland*. New York: Raven 1984:39-81.

**Acknowledgements and information** on grants or any other forms of financial support must be cited at the end of the references. Notes to the text, indicated by an asterisk or similar symbol, should be shown at the bottom of the page.

**Mathematical terms, formulae, abbreviations, units and measures** should conform to the standards set out in *Science* 1954;120:1078.

*Drugs* should be referred to by their chemical name; the commercial name should be used only when absolutely unavoidable (capitalizing the first letter of the product name and giving the name of the pharmaceutical firm manufacturing the drug, town and country).

The editorial office accepts only papers that have been prepared in strict conformity with the general and specific editorial norms for each survey. The acceptance of the papers is subject to a critical revision by experts in the field, to the implementation of any changes requested, and to the final decision of the Editor in Chief.

The Authors are required to correct and return (within 3 days of their mailing) only the first set of galley proofs of their paper.

Authors may order reprints, at the moment they return the corrected proofs by filling in the reprint order form enclosed with the proofs.

The Publisher remains at the complete disposal of those with rights whom it was impossible to contact, and for any omissions.

Journal registered at "Registro pubblico degli Operatori della Comunicazione" (Pacini Editore srl registration n. 6269 - 29/8/2001).

Published by PACINI EDITORE, Pisa, Italy - May 2019

## EDITORIAL

### Cribriform-morular variant of thyroid carcinoma

J.M. Cameselle-Teijeiro, M. Sobrinho-Simões ..... 1

## ORIGINAL ARTICLES

### National survey of anatomical pathology centres in Italy: the questionnaire

G. Mazzoleni, M. Barbareschi, M. Basciu, D. Fassinato, P. Vian, F. Vittadello, M. Truini, G. De Rosa, S.M. Mezzopera ..... 4

### Hemangioma of the umbilical cord with associated amniotic inclusion cyst: two uncommon entities occurring simultaneously

G. Angelico, S. Spadola, A. Ieni, A. Gurrera, M.G. Arena, S.G. Vitale, D. Arciuolo, M. Valente, A. Santoro, F. Inzani, G.F. Zannoni..... 13

### Expression of CD133 as a cancer stem cell marker in invasive gastric carcinoma

S. Attia, N. Atwan, M. Arafa, R.A. Shahin ..... 18

### Histopathological assessment of prognostic factors in pancreatic resection specimens using a standardised protocol

A. Silvanto, T. Balamurugan, I.N. Bagwan ..... 24

### Comparative analysis of margin status in breast conservation surgery and its correlation with subsequent re-excision findings

K. Krishnamurthy, C.A. Febres-Aldana, S. Alghamdi, T. Mesko, J. Paramo, R.J. Poppiti ..... 31

## CASE REPORT

### Case report of a combined oncocytoma and type 1 papillary renal cell carcinoma: a rare entity

R. Gaeta, A. Tognetti, E.F. Kauffmann, L.E. Pollina..... 37

## PATHOLOGICA STORICA

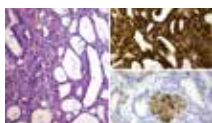
### Camillo Golgi per Pathologica nel 1909

C. Patriarca ..... 41

## GUIDELINES AND RECOMMENDATIONS

### Procedures and operating instructions for diagnosis in vascular anomalies and pathology

L. Moneghini, M.C. Mihm, E. Fulcheri ..... 48



**Front cover:** Cribriform-morular thyroid carcinoma showing a predominant cribriform pattern (A), and strong nuclear and cytoplasmic immunoreactivity for  $\beta$ -catenin (B). The morules are positive for CD10 (C) (page 2).